

---

## TREMEC Service Bulletin TRTB05007

---

**Date:** 10/20/2005

**Subject:** Transmission Tag Identification

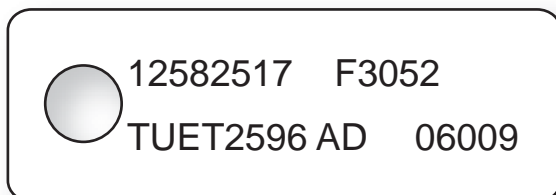
To help identify the TREMEC transmission model, locate the metal tag, usually attached to one of the bolts securing the rear extension housing to the main case. Below are examples and an explanation of the information found on the tag. Chart A gives the date code information, and Chart B contains the TREMEC production number prefix to model information.

### 3650 – T5 FORD OE



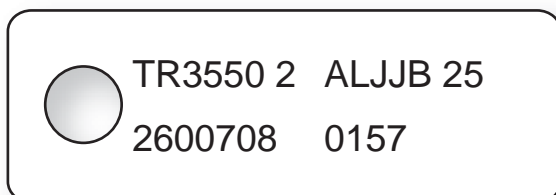
**TCET2070** = TREMEC Part Number  
(see chart B for Production Prefix to model)  
**AG** = Revision Level  
**JE101** = Mfg. Date & Shift  
J = September (see chart A)  
E = 2004 (see chart A)  
10 = 10<sup>th</sup>  
1 = 1<sup>st</sup> Shift  
**4R33 7003 AF** = Customer Part Number  
**01391** = Serial Number

### T-56, TR6060



**12582517** = Customer Part Number  
**F3052** = Mfg. Date & Shift  
F = June (see chart A)  
30 = 30<sup>th</sup>  
5 = 2005 (see chart A)  
2 = 2nd Shift  
**TUET2596** = TREMEC Parts Number  
(see chart B for Production Prefix to model)  
**AD** = Revision Level  
**06009** = Serial Number

### 3550/TKO Aftermarket



**TR3550 2** = Transmission Family  
**ALJ** = Revision Level  
**JB 25** = Mfg. Date  
J = September (see chart A)  
B = 2001 (see chart A)  
25 = 25<sup>th</sup>  
**2600708** = TREMEC Part Number  
(see chart B for Production Prefix to model)  
**0157** = Serial Number

**TKO500/600 Aftermarket**



**TR3550 9** = Transmission Family  
**AF31** = Mfg. Date  
 A = January (see chart A)  
 F = 2005 (see chart A)  
 30 = 30<sup>th</sup>

**TCET4617** = TREMEC Part Number  
 (see chart B for Production Prefix to model)

**AC** = Revision Level  
**0119** = Serial Number

Chart A – Date Code Information			
Year Code		Month Code	
A = 00 (90)	F = 05 (95)	A = January	G = July
B = 01 (91)	G = 06 (96)	B = February	H = August
C = 02 (92)	H = 07 (97)	C = March	J = September
D = 03 (93)	J = 08 (98)	D = April	K = October
E = 04 (94)	K = 09 (99)	E = May	L = November
		F = June	M = December

Chart B – Production Prefix to Model	
Assy Number Prefix	Model
1352	T5
1381	T45
1386	T56
2600###	TR3550, TKO (Orig. Design)
TCET	TR3550 II, TKO II (Orig. Design)
TCET	TR3450
TCET	TR3550
TCET	TKO500,TKO600
TCET	TR3650
TDET	TR4050
TNET	T56
TSET	T45
TTET	T5
TUET	T56
TUET	TR6060



14700 Helm Court  
Plymouth, MI 48170  
(800) 401-9866 or (734) 456-3770  
Fax: (734) 456-3739  
[www.ttcautomotive.com](http://www.ttcautomotive.com)

