



208-453-9800

sales@moderndriveline.com

www.moderndriveline.com

REV: 02-03-2025

## MDL CARBON FIBER DRIVESHAFT ORDER FORM

1350 U-JOINTS - 3.2" Dia. / JJC-AC0320

### STEP 1: VEHICLE DATA

Total Vehicle Weight \_\_\_\_\_ Horsepower \_\_\_\_\_

Torque: \_\_\_\_\_ Max RPM \_\_\_\_\_

Send completed form to:  
sales@moderndriveline.com

### STEP 2: DRIVESHAFT OPTIONS

#### Slip yoke option:

##### Counter Bored

- ☐ 9080-113 (GM 27 - 1.503" O.D., 6.9" Long)  
☐ 9080-114 (GM 32 - 1.886" O.D., 7.9" Long)  
☐ 9080-138 (GM 32 - 1.886" O.D., 5.5" Long)  
☐ 9080-120 (GM 32 - 1.888" O.D., 5.5" Long, Hardened) **+\$100**  
☐ 9080-122 (Mopar 30 - 1.680" O.D., 6.1" Long)

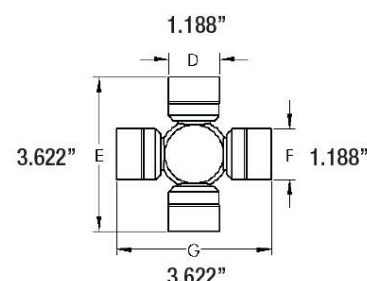
##### Full Spline

- ☐ 9080-112 (GM 27 - 1.503" O.D., 5.5" Long)  
☐ 9080-116 (GM 32 - 1.886" O.D., 5.5" Long)  
☐ 9080-115 (GM 32 - 1.886" O.D., 6.9" Long)  
☐ 9080-121 (GM 27 - 1.499" O.D., 5.5" Long, Hardened) **+\$100**  
☐ 9080-118 (Ford 28 - 1.598" O.D., 6.6" Long [4R70W])  
☐ 9080-125 (Ford 28 - 1.499" O.D., 6.5" Long [C4, AOD, T5, T10])  
☐ 9080-117 (Ford 31 - 1.685" O.D., 6.4" Long)

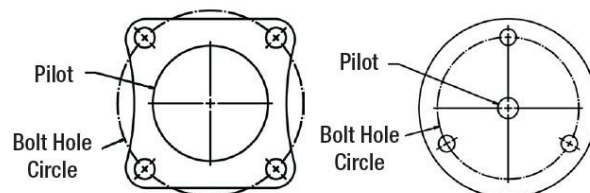
#### Rear Flange yoke option:

- ☐ 9080-134 (4 Bolt, 2.0" Pilot, 4.25" Bolt Hole Circle) **+\$100**  
☐ 9080-133 (4 Bolt, 2.95" Pilot, 4.75" Bolt Hole Circle) **+\$100**  
☐ 9080-135 (3 Bolt, 16mm Pilot, 110mm Bolt Hole Circle) **+\$200**  
☐ None

1350 U-Joint Dimensions



Flange Yoke Dimensions



### STEP 3: SFI

Certified to the SFI 43.1 Standard: ☐ Yes **+\$35** ☐ No

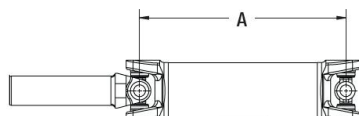
### STEP 4: DRIVESHAFT MEASUREMENTS

Take measurements with vehicle at ride height. Measure to within 1/16". Available in lengths up to 65".

If accurate driveshaft sizing is known, please measure:

Center of front U-joint to center of rear U-joint: \_\_\_\_\_

Driveshaft with Rear U-Joint



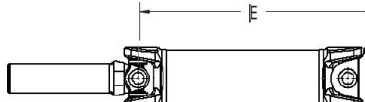
Take this measurement with the slip yoke in its operating position. The slip yoke operating position is typically determined by pulling the slip yoke out of the transmission 1" after it is fully bottomed out.

OR

If accurate driveshaft sizing is known and a rear pinion flange is required, please measure:

Center of front U-joint to end of flange yoke \_\_\_\_\_

Driveshaft with Rear Flange Yoke

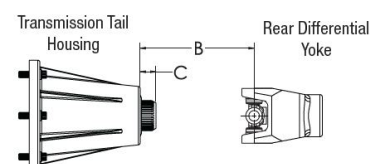


OR

End of transmission tail housing to center of rear U-joint (B): \_\_\_\_\_

and

End of output shaft to end of transmission tail housing (C): \_\_\_\_\_

Detailed View  
Minus the Driveshaft



## MDL CARBON FIBER DRIVESHAFT ORDER FORM

1350 U-JOINTS - 3.2" Dia. / JJC-AC0320

### PAYMENT & LEAD TIME

50% **non-refundable** deposit required on all custom driveshaft orders before production begins. The approximate lead time for a custom driveshaft is 2 weeks from receipt of completed order form, unless otherwise indicated in writing from MDL.

### LEGAL DISCLAIMER NOTICE

This composite driveshaft product and related components are sold as-is without any warranty whatsoever, expressed or implied, including but not limited to any implied warranties of merchantability or fitness for a particular purpose. MDL assumes no responsibility or liability for the selection, installation or any use of the products. The end user and any person who installs this product and related components are solely responsible for determination of the suitability of the product and components selected. The end user installs and uses the products and components at their own risk and agrees to fully indemnify MDL against any claims, damages or losses resulting from the selection, installation or use of the products or related components.

**MODERN DRIVELINE IS NOT RESPONSIBLE FOR IMPROPER OR INCORRECT INFORMATION PROVIDED BY CUSTOMER.**

### ALL SALES FINAL

**Warning:** Be sure to inspect all components regularly, especially following a crash. Do not use any components which may have been damaged.

**Warning:** If composite driveshaft is dropped or damaged, it should be taken out of service and replaced.

Only experienced and qualified persons should install the products and components. Failure to properly install the product or related components may result in vehicle damage, personal injury or death.

### QUESTIONS?

For any questions, please contact Modern Driveline at 208-453-9800 or sales@moderndriveline.com to speak to a support specialist. Our office hours are Monday - Friday, 8:00 AM – 5:00 PM MST (Closed for lunch from 12:00 PM – 1:00 PM MST)

### PAYMENT & LEAD TIME

Please submit this completed order form to Modern Driveline via email at sales@moderndriveline.com.

### COMPLETED BY BUYER

By signing below, I agree to the above disclaimer information and confirm that all information I have provided is accurate.

Signature \_\_\_\_\_ Date \_\_\_\_\_

Print Name \_\_\_\_\_

Address \_\_\_\_\_

City \_\_\_\_\_ State \_\_\_\_\_ Zip \_\_\_\_\_

Email \_\_\_\_\_ Phone \_\_\_\_\_